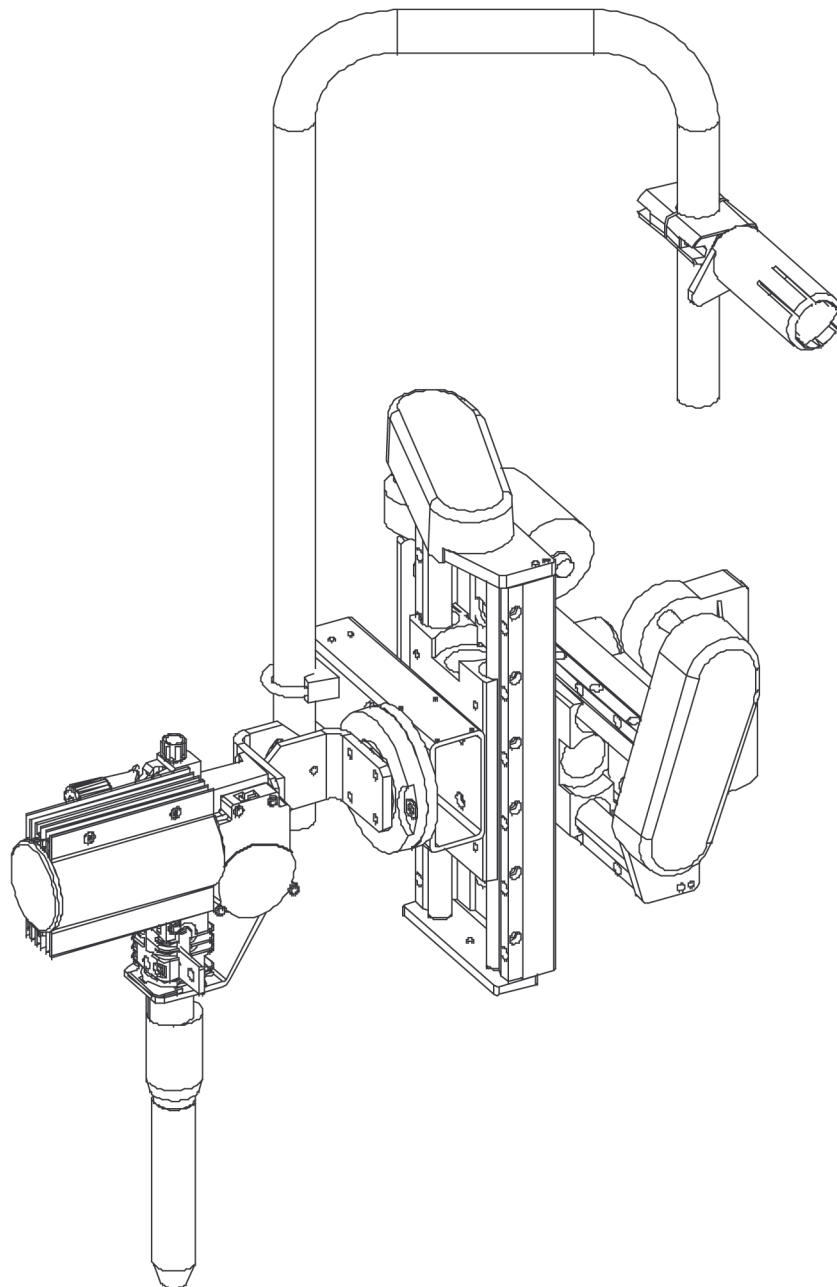


A2SG J1 4WD

MIG/MAG welding head



Spare parts list

Ordering number	Denomination	Type	Serial no.
0449 181 900	Welding head	A2SG (4WD, MIG/MAG) with PEK	940-xxx-xxxx
0449 181 901	Welding head	A2SG (4WD, MIG/MAG) with PEK, motorised slide and A6 PAV	940-xxx-xxxx
0449 181 902	Welding head	A2SG (4WD, MIG/MAG) with PEK, motorised slide and A6 GMH	940-xxx-xxxx
0449 181 903	Welding head	A2SG (4WD, MIG/MAG) with PEK and motorised slide	940-xxx-xxxx
0449 181 905	Welding head	A2SG (4WD, MIG/MAG) with PEK, motorised slide and A6 GMH	940-xxx-xxxx
0449 181 906	Welding head	A2SG (4WD, MIG/MAG) with PEK and motorised slide	940-xxx-xxxx
0449 181 907	Welding head	A2SG J1 4WD, MIG/MAG	940-xxx-xxxx
0449 181 950	Welding head	A2SG (4WD, MIG/MAG)	940-xxx-xxxx

Spare parts may be ordered through your nearest ESAB dealer, see esab.com. When ordering, please state product type, serial number, denominations and ordering numbers according to the spare parts list. This facilitates dispatch and ensures correct delivery.

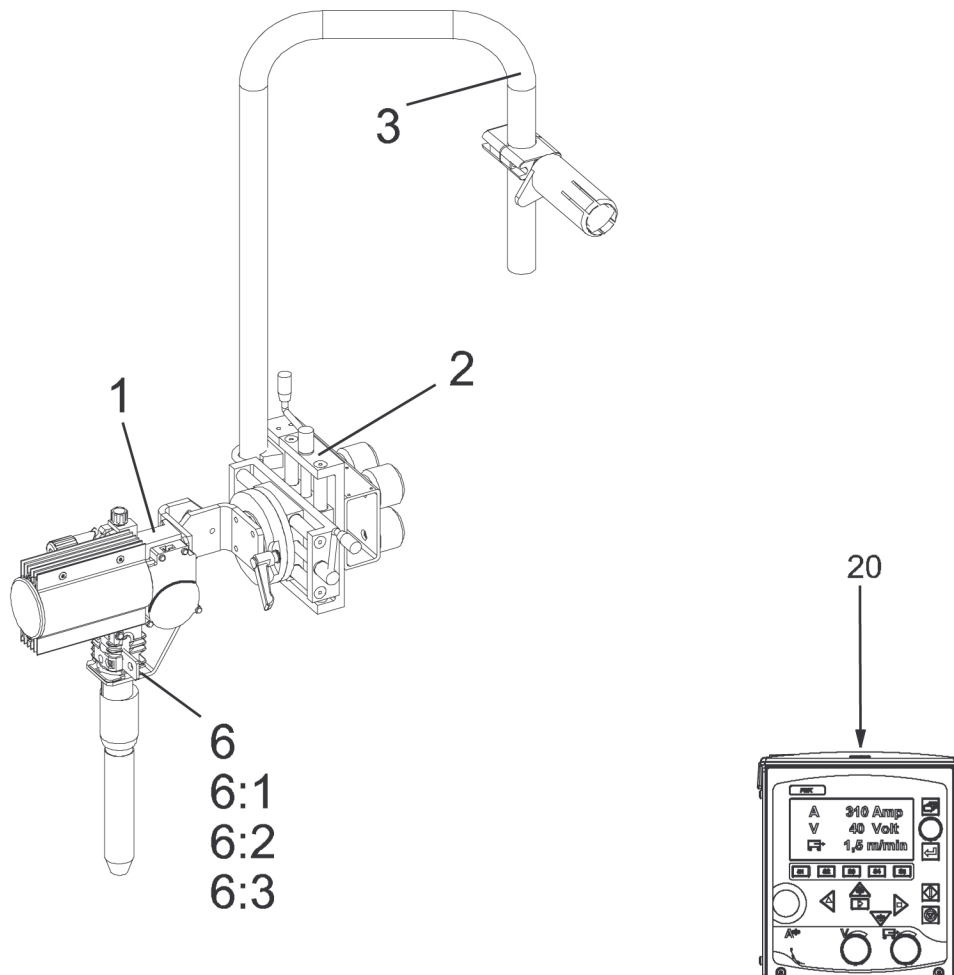
Maintenance and repair work should be performed by an experienced person, and electrical work only by a trained electrician. Use only recommended spare parts.

1	SPARE PARTS	4
1.1	Welding head - A2SG J1 4WD, MIG/MAG with PEK	4
1.2	Welding head - A2SG J1 4WD, MIG/MAG with PAV	5
1.3	Welding head - A2SG J1 4WD, MIG/MAG with A6 GMH	6
1.4	Welding head - A2SG J1 4WD, MIG/MAG with PEK	7
1.5	Welding head - A2SG J1 4WD, MIG/MAG with PAV	8
1.6	Welding head - A2SG J1 4WD, MIG/MAG with A6 GMH	9
1.7	Welding head - A2SG J1 4WD, MIG/MAG with PEK	10
1.8	Welding head - A2SG J1 4WD, MIG/MAG without control unit	11
1.9	Wire feed unit - MIG/MAG 4WD, right	11
1.10	Wire feed unit - MIG/MAG	12
1.11	Wire straightener	13
1.12	Wire straightener	14
1.13	Bearing housing	15
1.14	Contact equipment	16
1.15	Contact device	17
1.16	Contact device	18
1.17	Contact device	19
1.18	Solenoid valve with cable	20
1.19	Feed unit Euro 4WD	20
1.20	Slide travel kit - Manual	22
1.21	Slide	23
1.22	Rotary slide	24
1.23	Motorised slide kit	25
1.24	Wire drum holder	26

1 SPARE PARTS

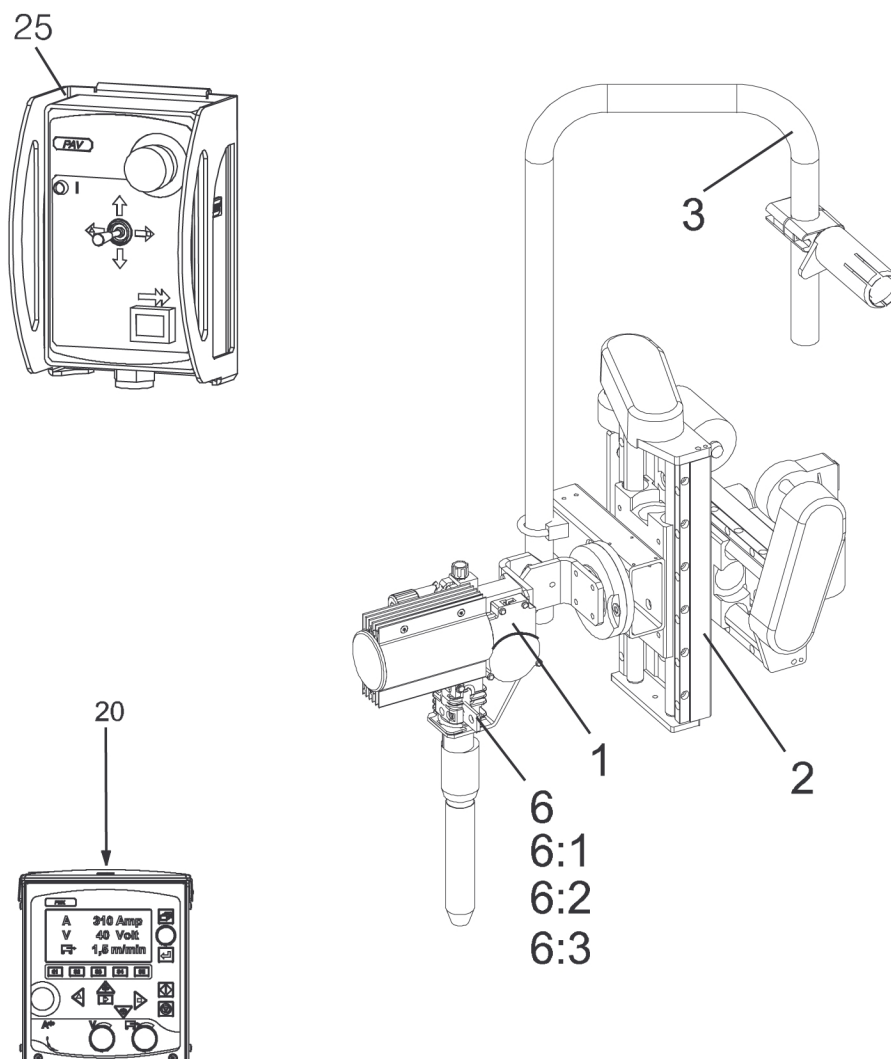
1.1 Welding head - A2SG J1 4WD, MIG/MAG with PEK

Item	Qty	Ordering no.	Denomination	Notes
		0449 181 900	Welding head	A2SG J1 4WD, MIG/MAG
1	1	0449 150 913	Wire feed unit complete	
2	1	0449 152 880	Slide kit, manual	90 mm
3	1	0449 155 880	Wire drum holder	
6	1	0449 153 905	Cable kit	L=5 m
6:1	1	0460 909 885	Pulse transducer cable	5 m
6:2	1	0461 249 885	Motor cable	5 m
6:3	1	0461 239 886	Cable	5 m
20	1	0460 504 880	Control box	PEK



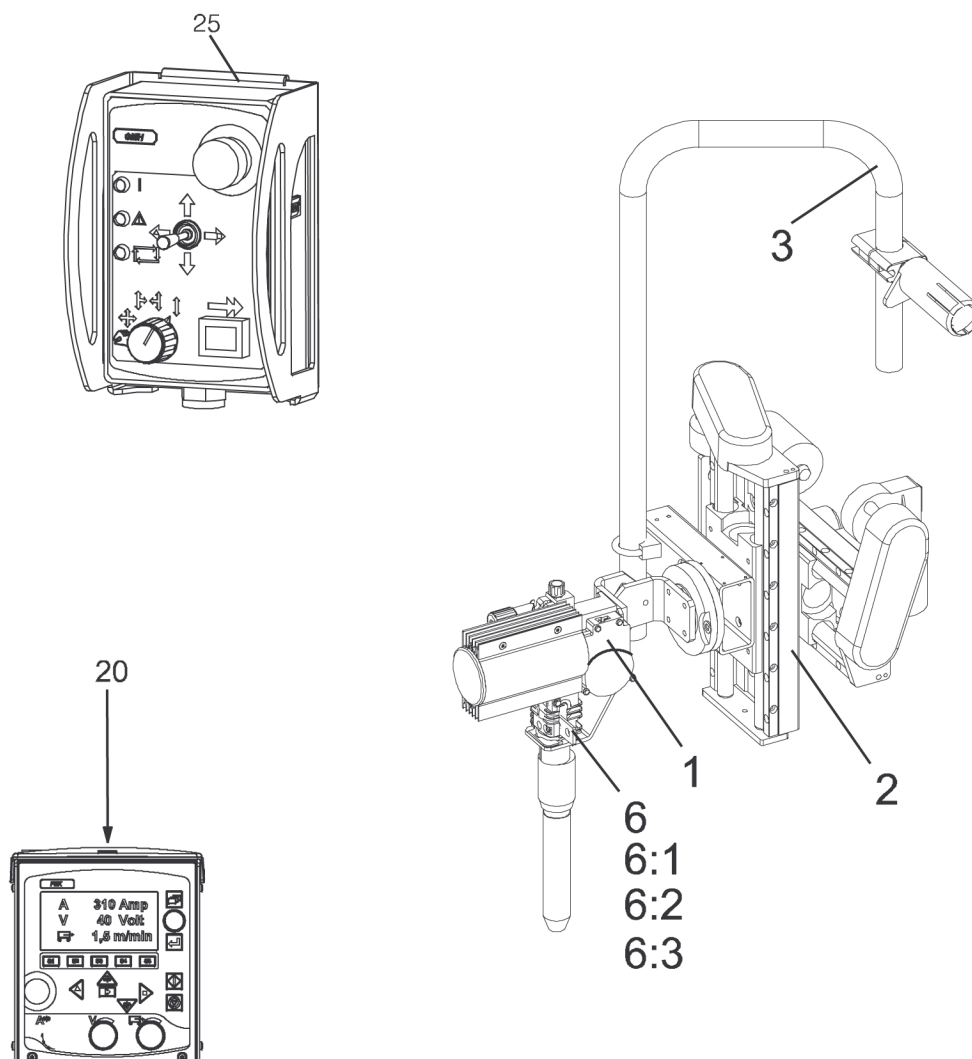
1.2 Welding head - A2SG J1 4WD, MIG/MAG with PAV

Item	Qty	Ordering no.	Denomination	Notes
		0449 181 901	Welding head	A2SG J1 4WD, MIG/MAG
1	1	0449 150 903	Wire feed unit complete	
2	1	0449 151 880	Slide kit, motorised	180 mm
3	1	0449 155 880	Wire drum holder	
6	1	0449 153 905	Cable kit	L=5 m
6:1	1	0460 909 885	Pulse transducer cable	5 m
6:2	1	0461 249 885	Motor cable	5 m
6:3	1	0461 239 886	Cable	5 m
20	1	0460 504 880	Control box	PEK
25	1	0460 697 880	Joint tracking unit	A6 PAV, see separate manual
26	1	0461 215 880	Cable kit	



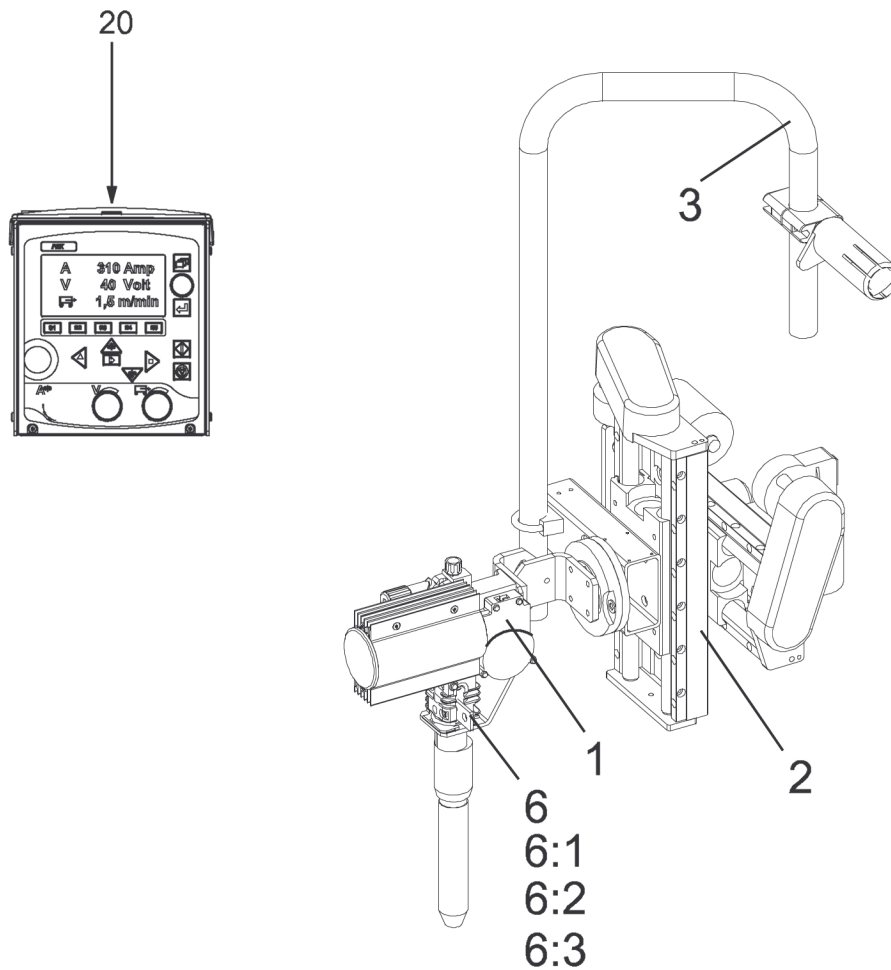
1.3 Welding head - A2SG J1 4WD, MIG/MAG with A6 GMH

Item	Qty	Ordering no.	Denomination	Notes
		0449 181 902	Welding head	A2SG J1 4WD, MIG/MAG
1	1	0449 150 903	Wire feed unit complete	
2	1	0449 151 880	Slide kit, motorised	180 mm
3	1	0449 155 880	Wire drum holder	
6	1	0449 153 905	Cable kit	L=5 m
6:1	1	0460 909 885	Pulse transducer cable	5 m
6:2	1	0461 249 885	Motor cable	5 m
6:3	1	0461 239 886	Cable	5 m
20	1	0460 504 880	Control box	PEK
25	1	0460 884 880	Joint tracking unit	A6 GMH, see separate manual
26	1	0461 215 880	Cable kit	



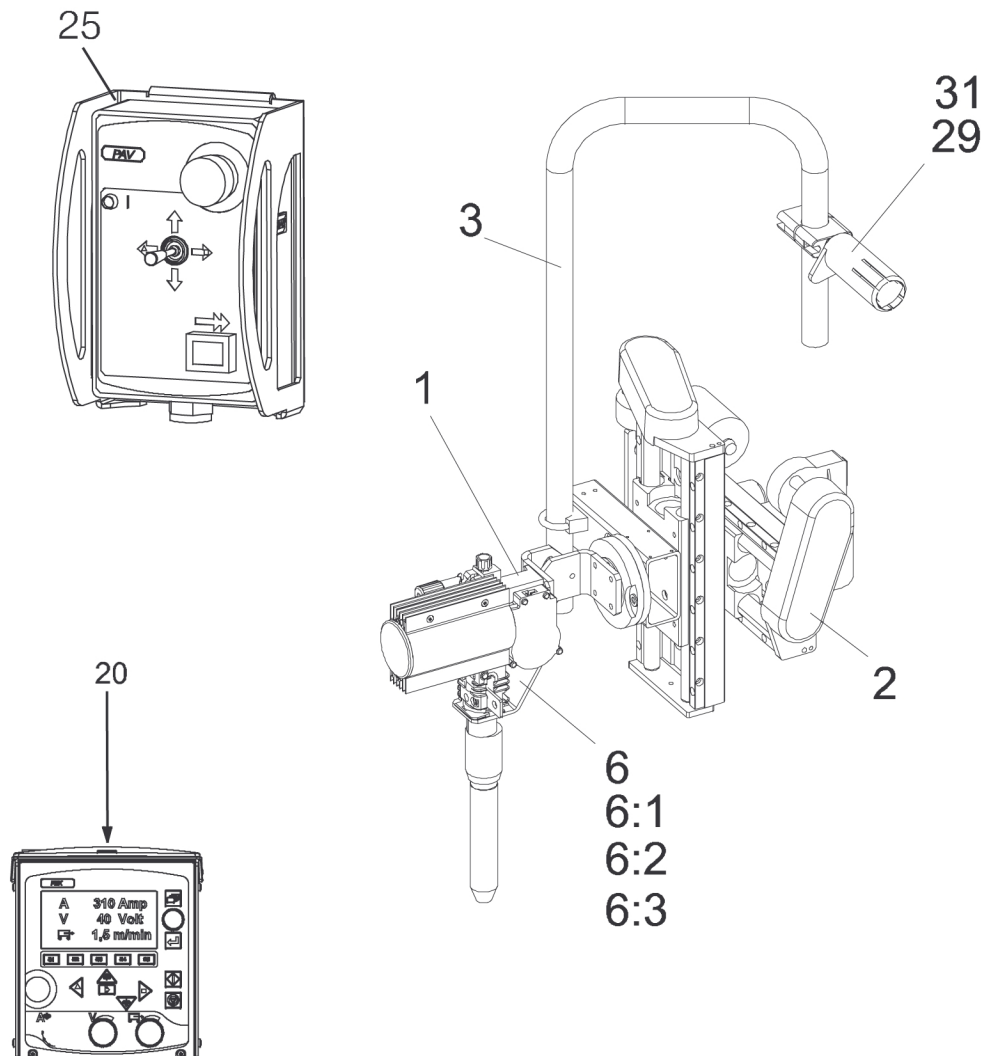
1.4 Welding head - A2SG J1 4WD, MIG/MAG with PEK

Item	Qty	Ordering no.	Denomination	Notes
		0449 181 903	Welding head	A2SG J1 4WD, MIG/MAG
1	1	0449 150 903	Wire feed unit complete	
2	1	0449 151 880	Slide kit, motorised	180 mm
3	1	0449 155 880	Wire drum holder	
6	1	0449 153 905	Cable kit	L=5 m
6:1	1	0460 909 885	Pulse transducer cable	5 m
6:2	1	0461 249 885	Motor cable	5 m
6:3	1	0461 239 886	Cable	5 m
20	1	0460 504 880	Control box	PEK



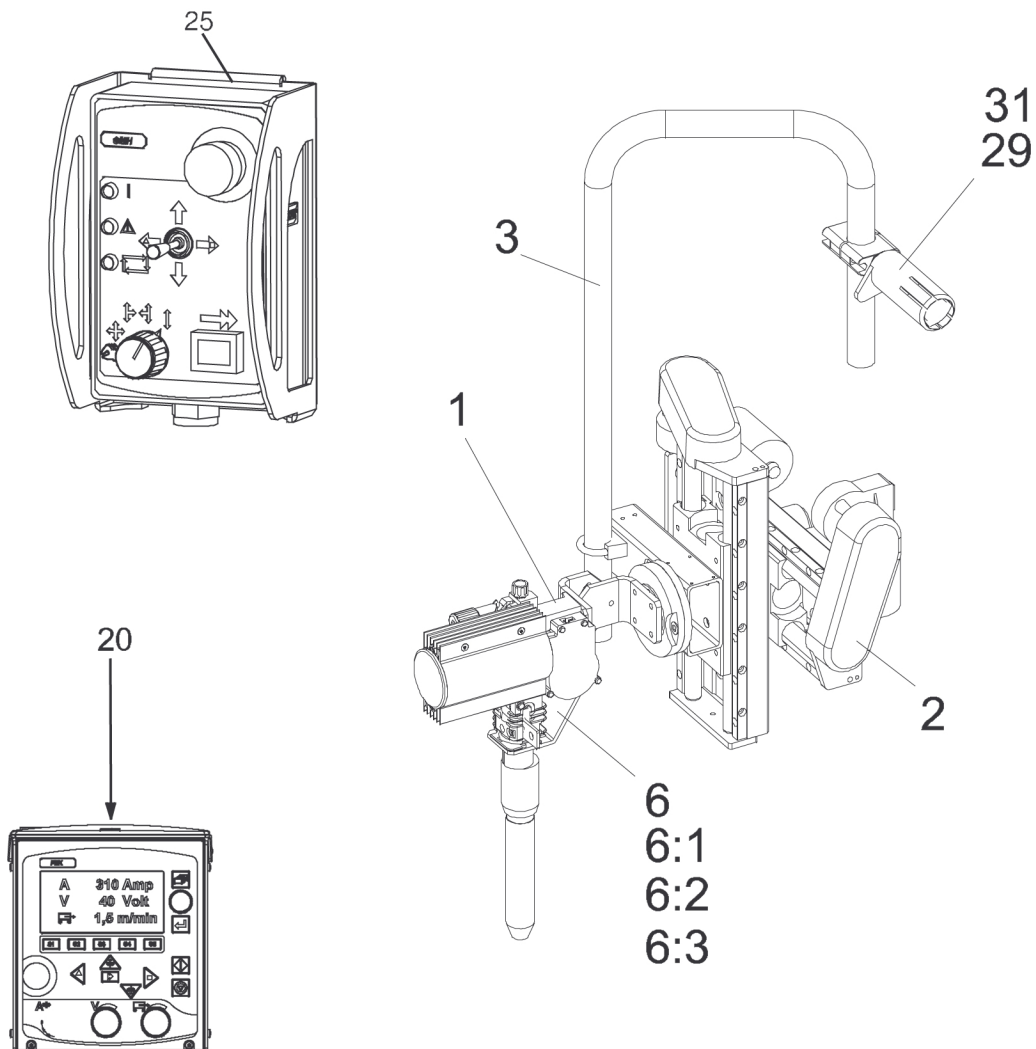
1.5 Welding head - A2SG J1 4WD, MIG/MAG with PAV

Item	Qty	Ordering no.	Denomination	Notes
		0449 181 905	Welding head	A2SG J1 4WD, MIG/MAG
1	1	0449 150 913	Wire feed unit complete	
2	1	0449 151 881	Slide kit, motorised	
3	1	0449 155 881	Wire drum holder	
6	1	0449 153 905	Cable kit	L=5 m
6:1	1	0460 909 885	Pulse transducer cable	5 m
6:2	1	0461 249 885	Motor cable	5 m
6:3	1	0461 239 886	Cable	5 m
20	1	0460 504 880	Control box	PEK
25	1	0460 697 880	Joint tracking unit	PAV, see separate manual
26	1	0461 215 880	Cable kit	
29	2	0154 734 001	Clamp	
31	1	0146 967 880	Brake hub heavy duty	



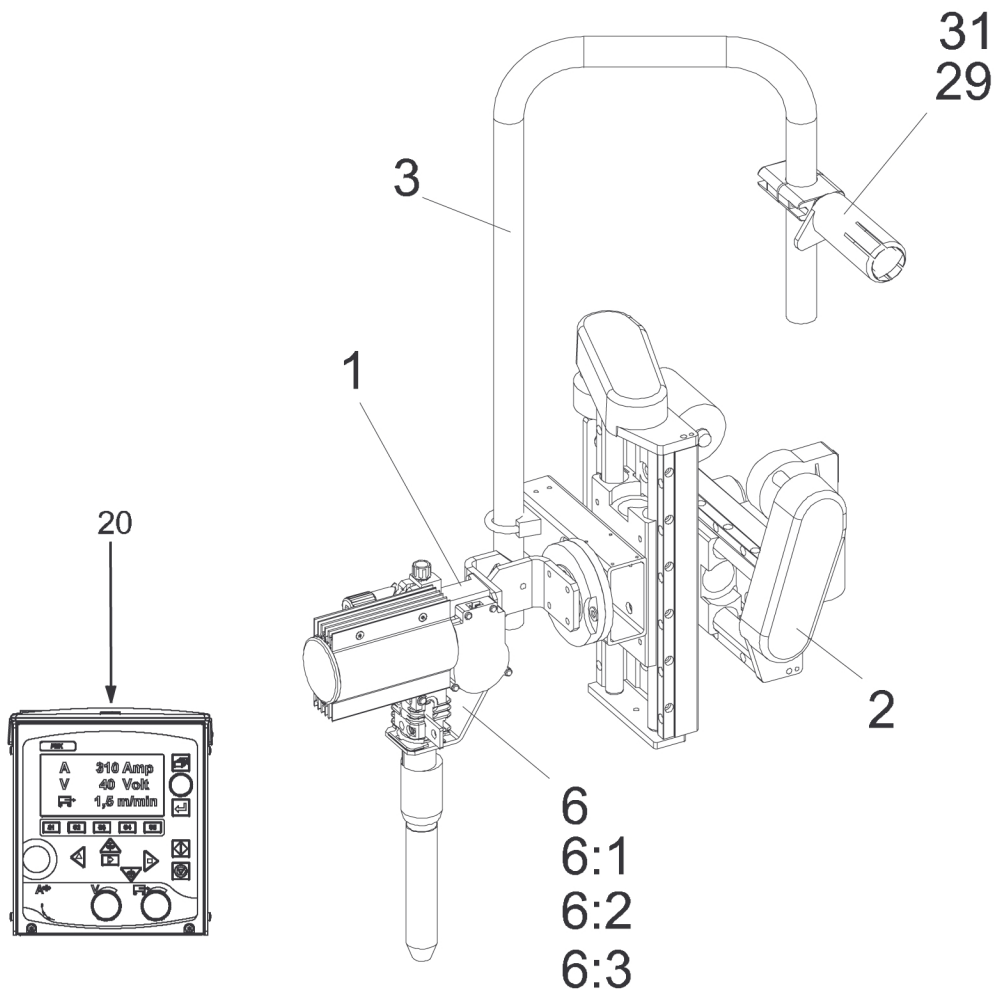
1.6 Welding head - A2SG J1 4WD, MIG/MAG with A6 GMH

Item	Qty	Ordering no.	Denomination	Notes
		0449 181 906	Welding head	A2SG J1 4WD, MIG/MAG
1	1	0449 150 913	Wire feed unit complete	
2	1	0449 151 881	Slide kit, motorised	
3	1	0449 155 881	Wire drum holder	
6	1	0449 153 905	Cable kit	L=5 m
6:1	1	0460 909 885	Pulse transducer cable	5 m
6:2	1	0461 249 885	Motor cable	5 m
6:3	1	0461 239 886	Cable	5 m
20	1	0460 504 880	Control box	PEK
25	1	0460 884 880	Joint tracking unit	A6 GMH, see separate manual
26	1	0461 215 880	Cable kit	
29	2	0154 734 001	Clamp	
31	1	0146 967 880	Brake hub heavy duty	



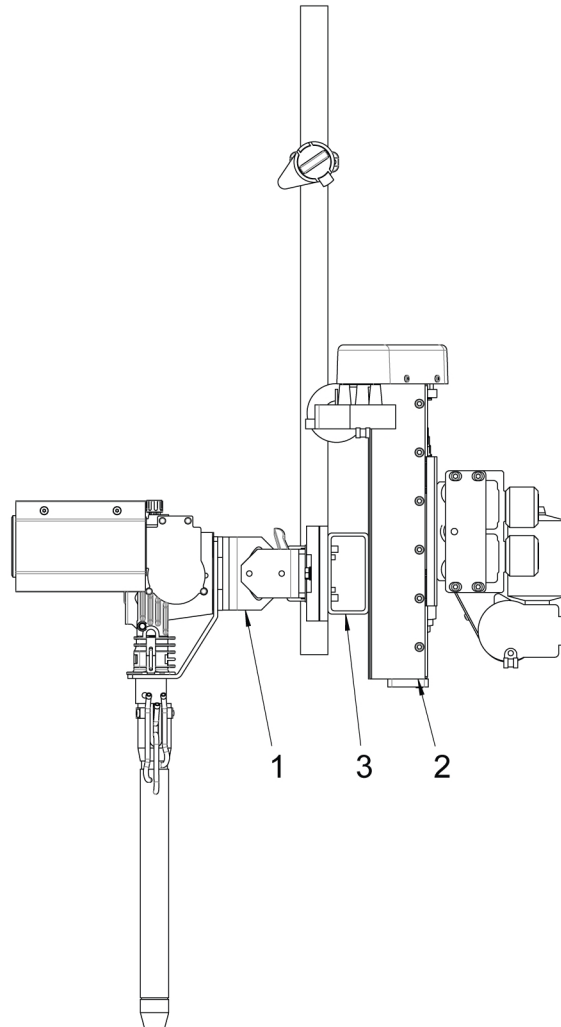
1.7 Welding head - A2SG J1 4WD, MIG/MAG with PEK

Item	Qty	Ordering no.	Denomination	Notes
		0449 181 907	Welding head	A2SG J1 4WD, MIG/MAG
1	1	0449 150 913	Wire feed unit complete	
2	1	0449 151 880	Slide kit, motorised	180 mm
3	1	0449 155 880	Wire drum holder	
6	1	0449 153 905	Cable kit	L=5 m
6:1	1	0460 909 885	Pulse transducer cable	5 m
6:2	1	0461 249 885	Motor cable	5 m
6:3	1	0461 239 886	Cable	5 m
20	1	0460 504 880	Control box	PEK
29	2	0154 734 001	Clamp	
31	1	0146 967 880	Brake hub heavy duty	



1.8 Welding head - A2SG J1 4WD, MIG/MAG without control unit

Item	Qty	Ordering no.	Denomination	Notes
		0449 181 950	Welding head	A2SG J1 4WD, MIG/MAG
1	1	0449 150 933	Wire feed unit complete	
2	1	0449 151 880	Slide kit, motorised	180 mm
3	1	0449 155 880	Wire drum holder	

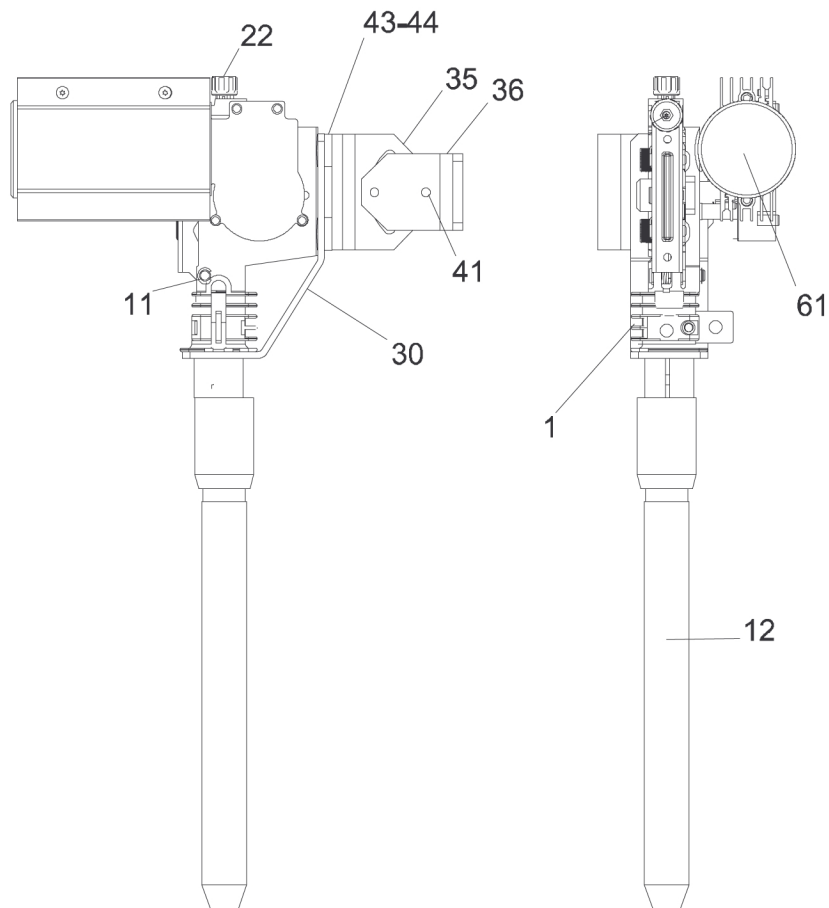


1.9 Wire feed unit - MIG/MAG 4WD, right

Item	Qty.	Ordering no.	Denomination	Notes
		0449 150 903	Wire feed unit complete	4WD MIG/MAG, right
1	1	0456 424 902	Feed unit	4WD
12	1	0457 460 881	Contact device	MTW 600, L=250
18	1	0461 238 881	Solenoid valve and cable	
22	1	0156 800 002	Wire liner	
25	1	0333 754 001	Hose	L=2.25 m, D14/6.3
27	2	0147 336 880	Hose coupling	

1 SPARE PARTS

Item	Qty.	Ordering no.	Denomination	Notes
30	1	0449 011 001	Support	
35	1	0449 009 002	Motor bracket	
36	1	0449 009 001	Motor bracket	
43	2	0163 139 002	Bushing	
44	2	0162 414 002	Insulating tube	
61	1	0462 132 880	Protection cover	

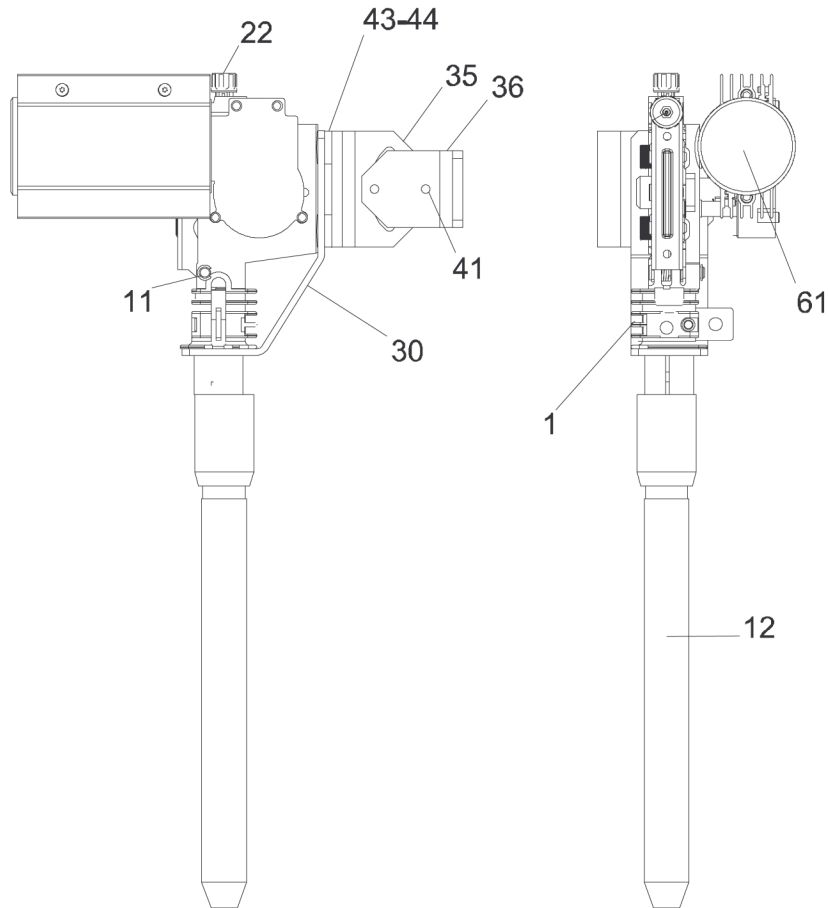


1.10 Wire feed unit - MIG/MAG

Item	Qty.	Ordering no.	Denomination	Notes
		0449 150 913	Wire feed unit complete	
1	1	0456 424 902	Feed unit	4WD
11	2	0417 699 001	Clamp	
12	1	0457 460 883	Torch	water-cold
18	1	0461 238 881	Solenoid valve and cable	L=3.0 m, 42 V
22	1	0156 800 002	Wire liner	
25	2	0333 754 001	Hose rubber	D14/6.3
26	6	0193 761 002	Hose clamp	D13/7
27	2	0147 336 880	Hose connector	
30	1	0449 011 001	Support	

1 SPARE PARTS

Item	Qty.	Ordering no.	Denomination	Notes
35	1	0449 009 002	Attachment	
36	1	0449 009 001	Attachment	
41	2	0219 504 305	Cup spring	
43	2	0163 139 002	Insulator	
44	2	0162 414 002	Insulating tube	
61	1	0462 132 880	Protection cover	

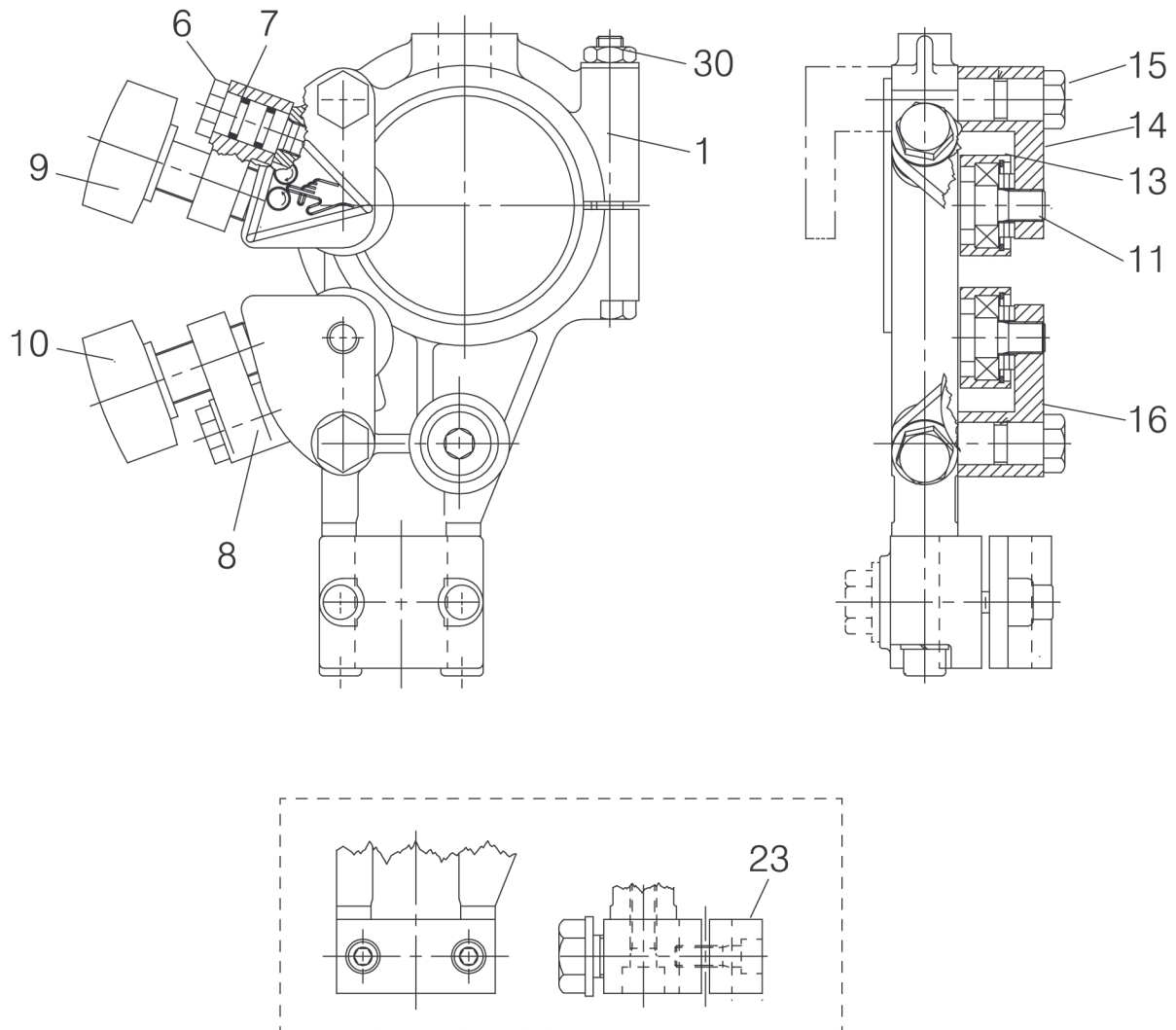


1.11 Wire straightener

Item	Qty.	Ordering no.	Denomination	Notes
		0147 639 882	Wire straightener	Right mounted
1	1	0156 449 001	Clamp	
6	2	0212 900 001	Spacer screw	
7	4	0215 201 209	O-ring	D11.3×2.4
8	2	0218 400 801	Pressure roller arm	
9	1	0218 810 181	Handwheel	
10	1	0218 810 182	Handwheel	
11	3	0332 408 001	Stub shaft	
13	3	0153 148 880	Roller	
14	1	0415 498 001	Thrust roller carrier	

1 SPARE PARTS

Item	Qty.	Ordering no.	Denomination	Notes
15	1	0212 902 601	Spacer screw	
16	1	0415 499 001	Thrust roller carrier	
23	1	0334 571 880	Contact clamp	
30	1	0212 601 110	Nut	M10

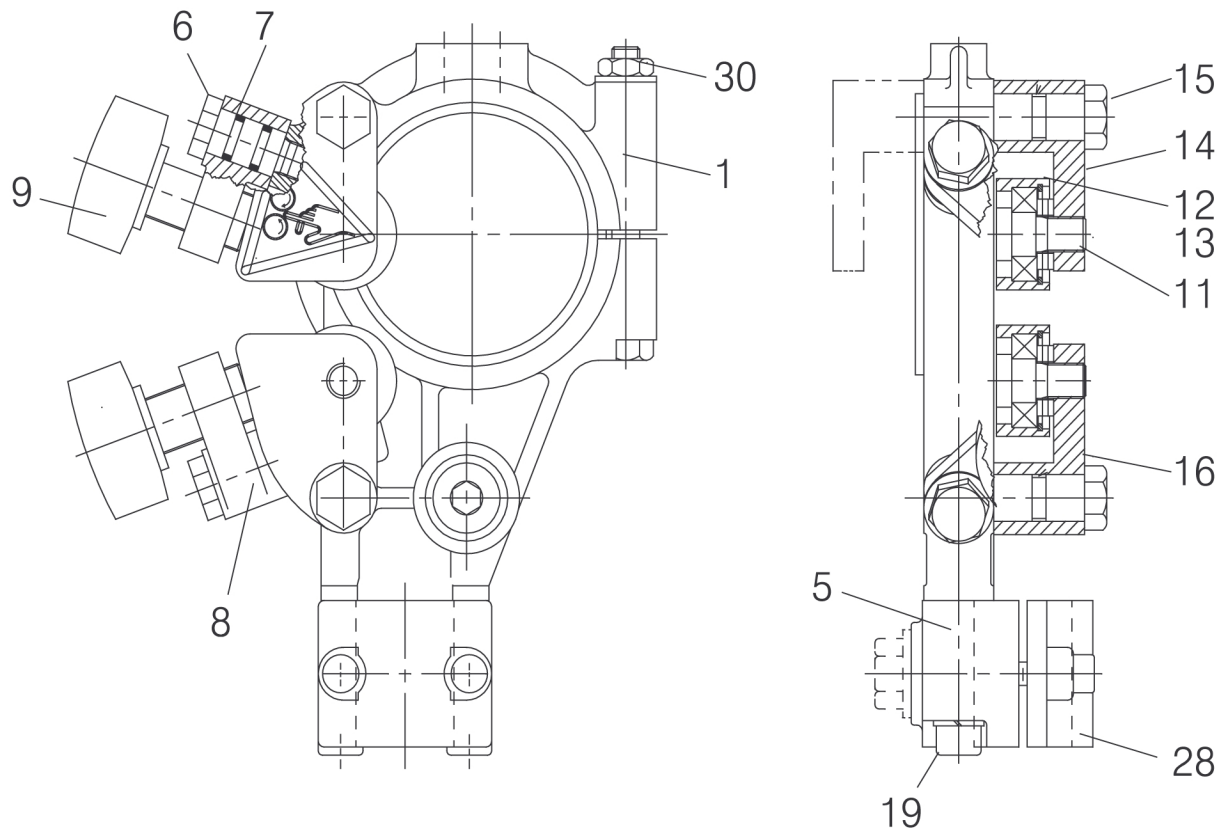


1.12 Wire straightener

Item	Qty.	Ordering no.	Denomination	Notes
		0147 639 886	Wire straightener	Right mounted
1	1	0156 449 001	Clamp	
5	1	0156 530 001	Clamp	Half
6	1	0212 900 001	Spacer screw	
7	4	0215 201 209	O-ring	D11.3×2.4
8	2	0218 400 801	Pressure roller arm	
9	1	0218 810 181	Handwheel	
11	3	0332 408 001	Stub shaft	
12	1	0218 524 580	Pressure roller	

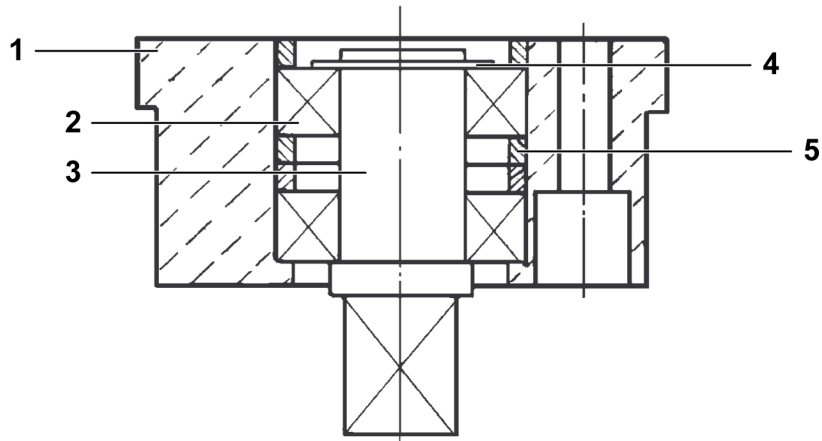
1 SPARE PARTS

Item	Qty.	Ordering no.	Denomination	Notes
13	3	0153 148 880	Roller	
14	1	0415 498 001	Thrust roller carrier	
15	1	0212 902 601	Spacer screw	
19	2	0219 501 013	Spring washer	D18.1/10.2
28	1	0156 531 001	Clamp	Half
30	1	0212 601 110	Nut	M10



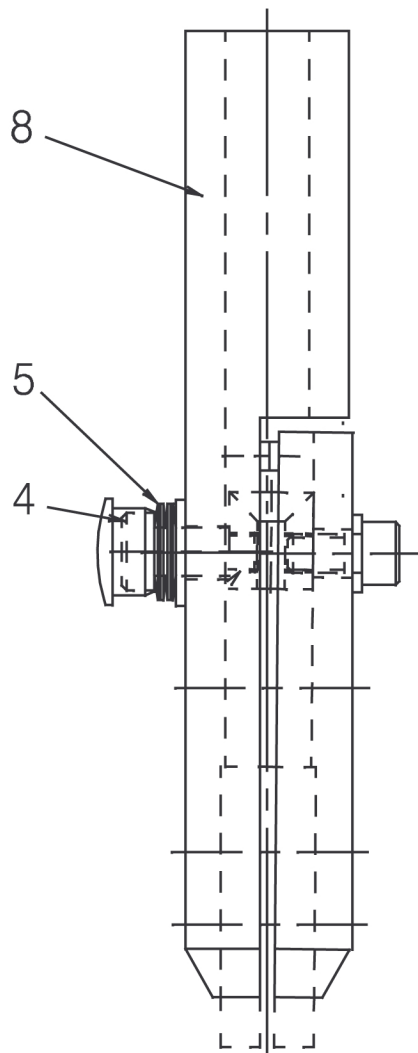
1.13 Bearing housing

Item	Qty.	Ordering no.	Denomination	Notes
		0413 072 881	Bearing housing with stub shaft	
1	1	0413 073 002	Bearing housing	
2	2	0190 726 003	Ball bearing	
3	1	0334 575 001	Stub shaft	
4	1	0215 701 014	Bearing ring	D17
5	3	0334 576 001	Spacer	



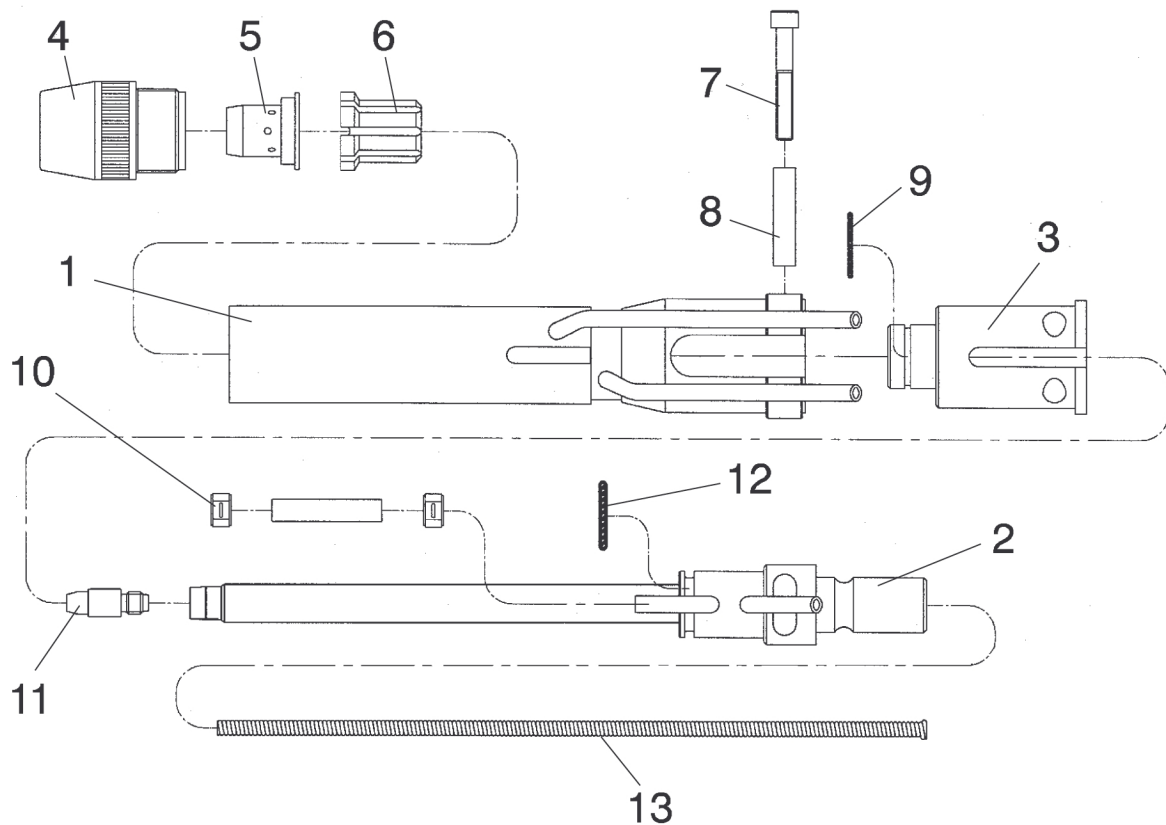
1.14 Contact equipment

Item	Qty.	Ordering no.	Denomination	Notes
		0417 959 881	Contact equipment	L=275 mm
4	1	0443 372 001	Screw	
5	4	0219 504 307	Belleville spring	T=1.1
8	1	0443 344 881	Pipe	L=275 mm



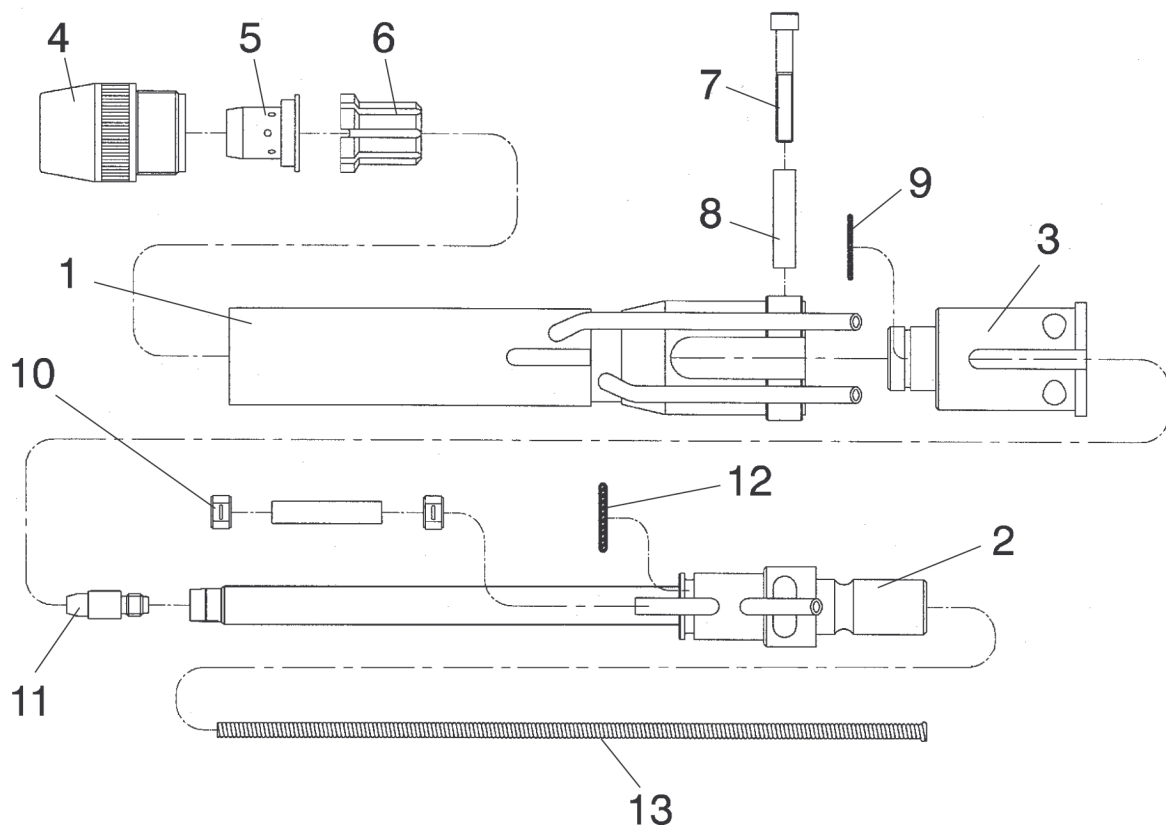
1.15 Contact device

Item	Qty.	Ordering no.	Denomination	Notes
		0457 460 881	Contact device	L=250 mm
1	1	0457 457 002	Cooling jacket	
2	1	0457 455 002	Contact tube	
3	1	0457 456 001	Insulation sleeve	
4	1	0457 451 001	Gas nozzle	
5	1	0457 452 001	Spatter protection	
6	1	0457 453 001	Centering sleeve	
7	1	0457 617 001	Allen screw	
8	1	0457 459 001	Insulation sleeve	
9	1	0457 458 001	O-ring	
10	1	0457 616 880	Water hose set	
11	1	0457 625 005	Contact tip	Ø1.2 (W)
	1	0457 625 007		Ø1.5 (W)
	1	0457 625 008		Ø1.6 (W)
	1	0457 625 009		Ø1.8 (W)
12	1	0457 458 002	O-ring	
13	1	0457 454 002	Wear insert (steel spiral)	L=260 mm, wire Ø1.0-1.6 mm (W)
	1	0457 620 002	Wear insert (brass tube)	L=258 mm, wire Ø2.0-2.4 mm (W)



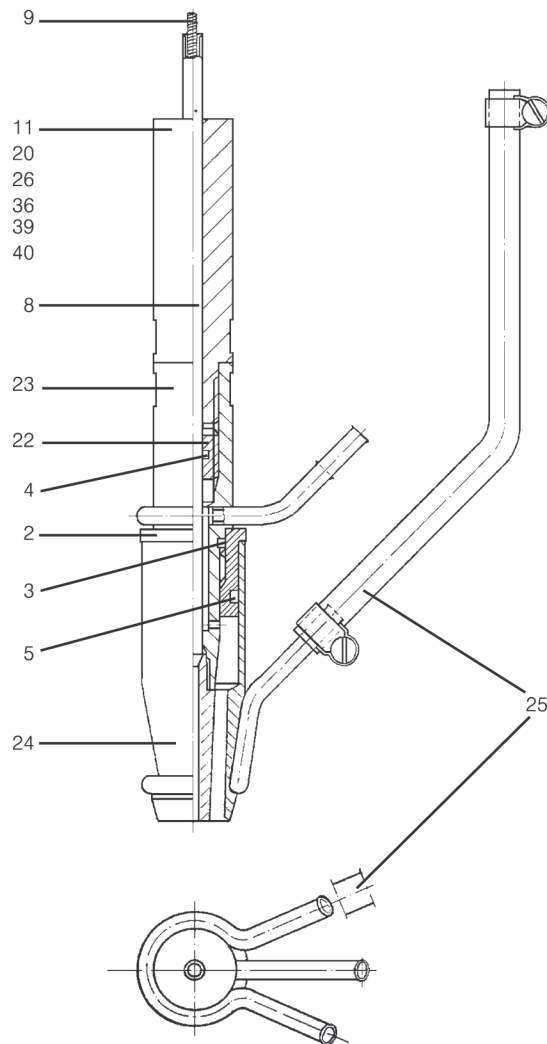
1.16 Contact device

Item	Qty.	Ordering no.	Denomination	Notes
		0457 460 882	Contact device	L=300 mm
1	1	0457 457 003	Cooling jacket	
2	1	0457 455 003	Contact tube	
3	1	0457 456 001	Insulation sleeve	
4	1	0457 451 001	Gas nozzle	
5	1	0457 452 001	Spatter protection	
6	1	0457 453 001	Centering sleeve	
7	1	0457 617 001	Allen screw	
8	1	0457 459 001	Insulation sleeve	
9	1	0457 458 001	O-ring	
10	1	0457 616 880	Water hose set	
11	1	0457 625 005	Contact tip	Ø1.2 (W)
	1	0457 625 007		Ø1.5 (W)
	1	0457 625 008		Ø1.6 (W)
	1	0457 625 009		Ø1.8 (W)
12	1	0457 458 002	O-ring	
13	1	0457 454 002	Wear insert (steel spiral)	L=260 mm, wire Ø1.0-1.6 mm (W)
	1	0457 619 001	Wear insert (teflon tube)	L=258 mm, wire Ø1.0-1.6 mm (W)
	1	0457 619 003	Wear insert (teflon insert)	L=310 mm, wire Ø2.0-2.4 mm (W)
	1	0457 620 003	Wear insert (brass tube)	L=308 mm, wire Ø2.0-2.4 mm (W)



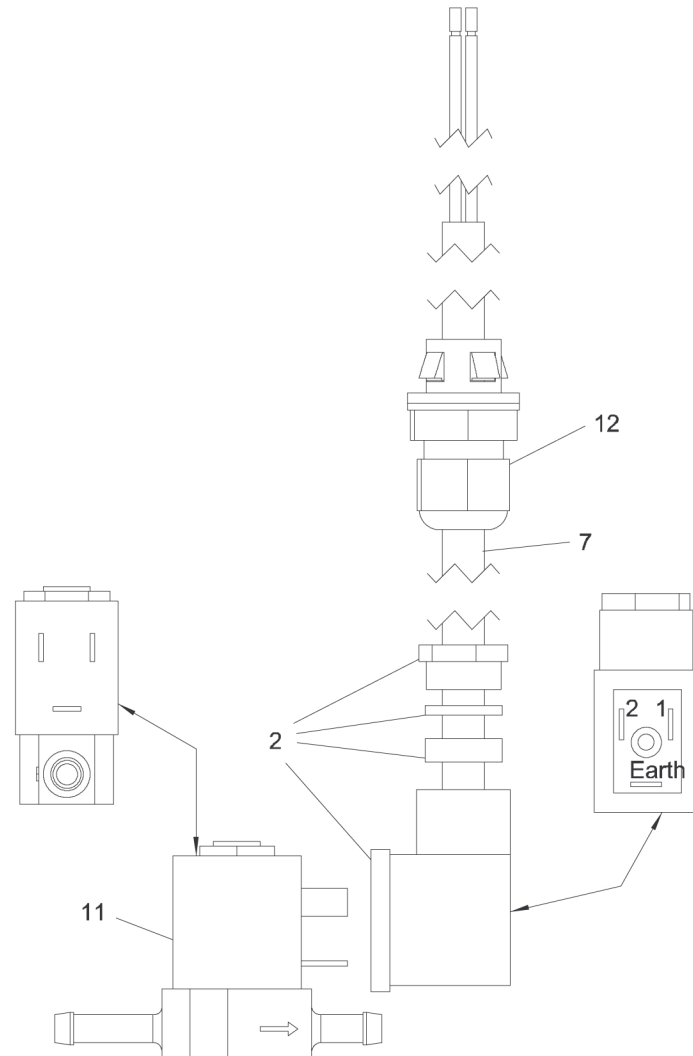
1.17 Contact device

Item	Qty.	Ordering no.	Denomination	Notes
		0030 465 389	Contact device	
2	1	0145 226 001	Insulating sleeve	
3	1	0190 680 313	O-ring	OR 15.3×2.4
4	1	0190 680 303	O-ring	OR 5.3×2.4
5	1	0190 680 405	O-ring	OR 22.2×3
8	1	0334 278 880	Insert tube	
9	1	0334 279 001	Spiral	
22	1	0146 099 001	Plug	
23	1	0145 534 882	Contact tube	
24	1	0145 227 882	Gas nozzle	
25	1	0144 998 882	Water hose	
39	1	0040 979 804	Extension	L=108 mm, D20



1.18 Solenoid valve with cable

Item	Qty.	Ordering no.	Denomination	Notes
		0461 238 881	Solenoid valve with cable	
2	1	0157 259 001	Contact	
3	1	0262 612 802	Cable	
7	3	0262 613 329	Cable	
11	1	0193 054 002	Solenoid valve	42 V
12	1	0194 269 002	Bushing	

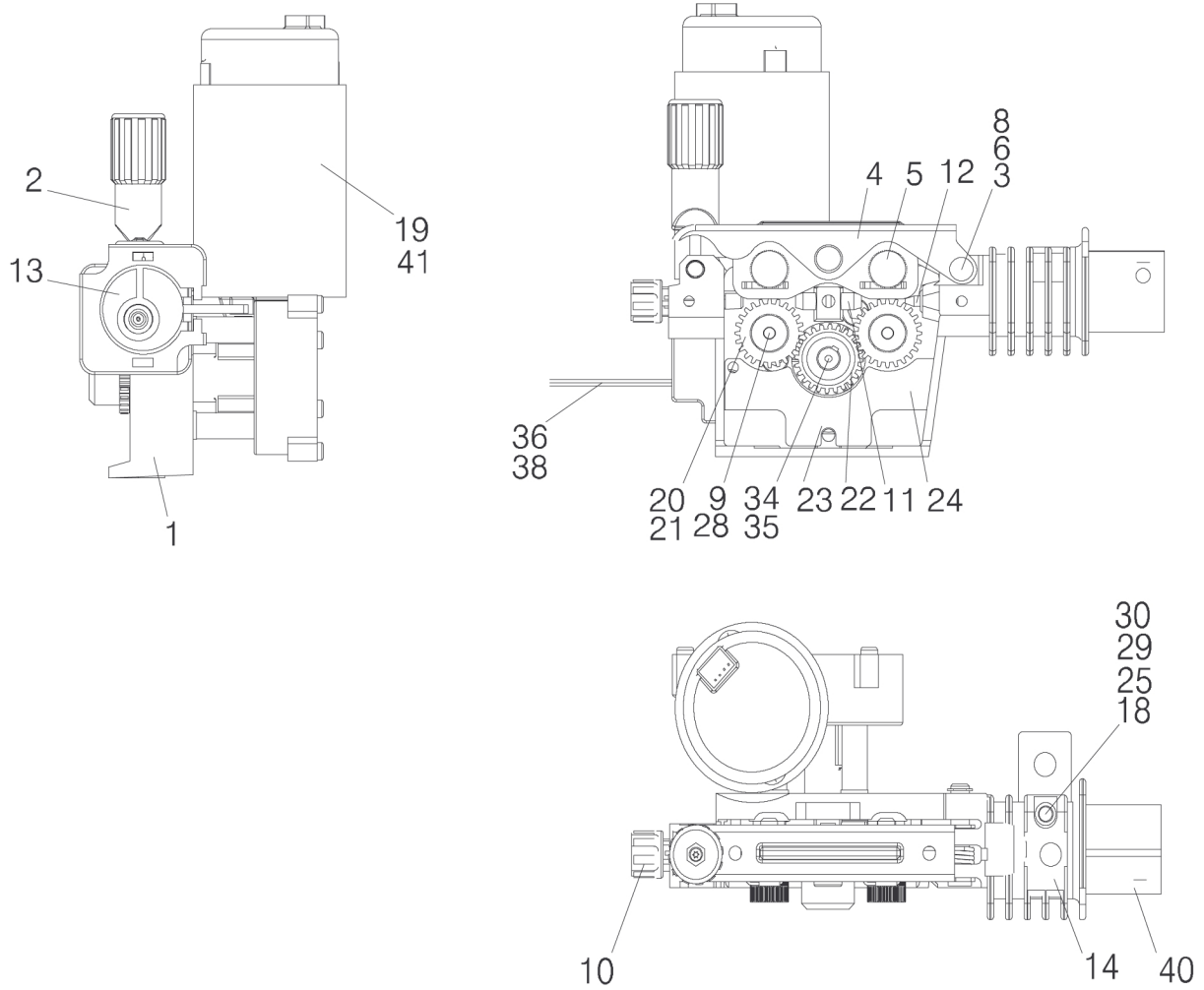


1.19 Feed unit Euro 4WD

Item	Qty.	Ordering no.	Denomination	Notes
		0456 424 902	Feed unit	Euro 4WD
1	1	0455 046 003	Gear housing	
2	1	0368 749 881	Pressure device	
3	1	0458 997 001	Shaft	
4	1	0459 001 880	Pressure arm	
5	2	0458 999 001	Shaft	

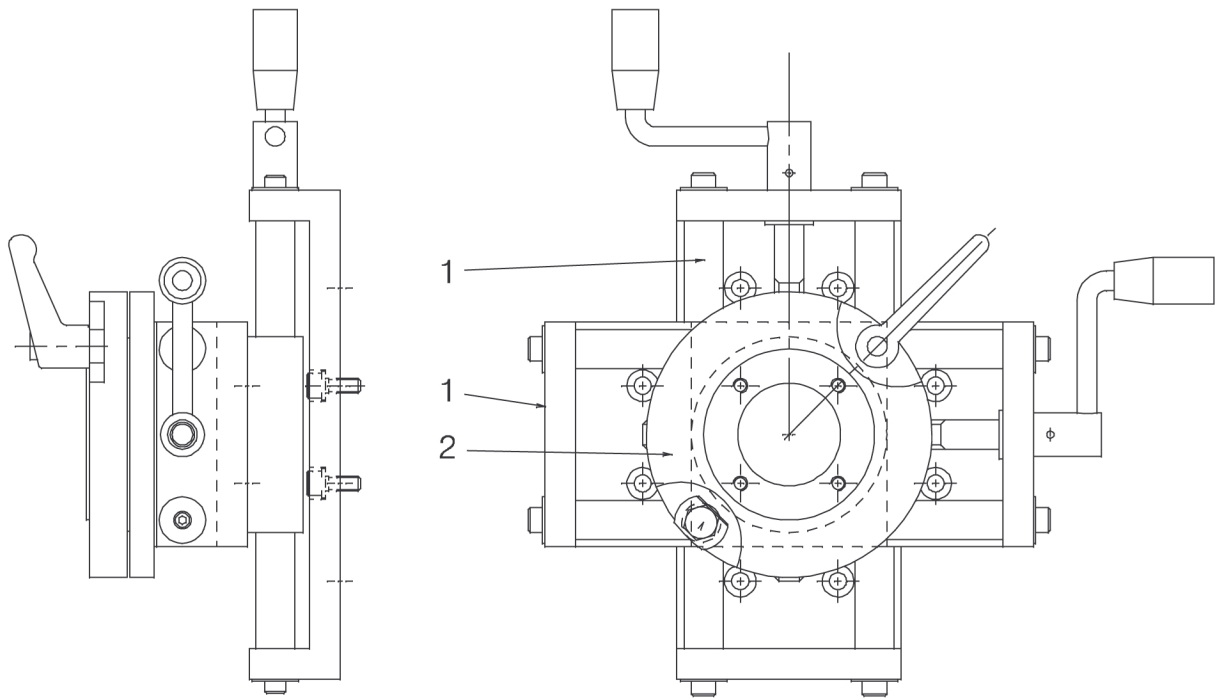
1 SPARE PARTS

Item	Qty.	Ordering no.	Denomination	Notes
6	1	0458 993 001	Torsion spring	
8	4	0215 702 708	Locking washer	
9	2	0458 722 001	Shaft, feed roller	
10	1	0380 351 001	Wire guide nipple	
11	1	0455 072 001	Intermediate nozzle	
12	1	0469 837 880	Outlet nozzle	
13	1	0457 365 001	Current connection	
18	1	0455 048 001	Insulating tube	
19	1	0455 077 003	Drive unit	
21	4	0459 441 880	Adapter	
22	1	0459 440 001	Motor gear	
23	4		Screw	M6×16 mrt ground-cutter
24	1	0469 838 001	Cover	
25	1		Nut	M6
28	2		Locking nut	M6
29	1		Screw	M6×40 stal 8.8f
30	1		Washer	12×6.4×1.5
34	1		Screw	M4×12
35	1	0193 104 002	Rivet washer	D16/5×1
40	1		Screw	M8×25
41	3		Screw	M6×16
44	1	0459 055 001	Pin bolt	
45	1		Screw	M3×12



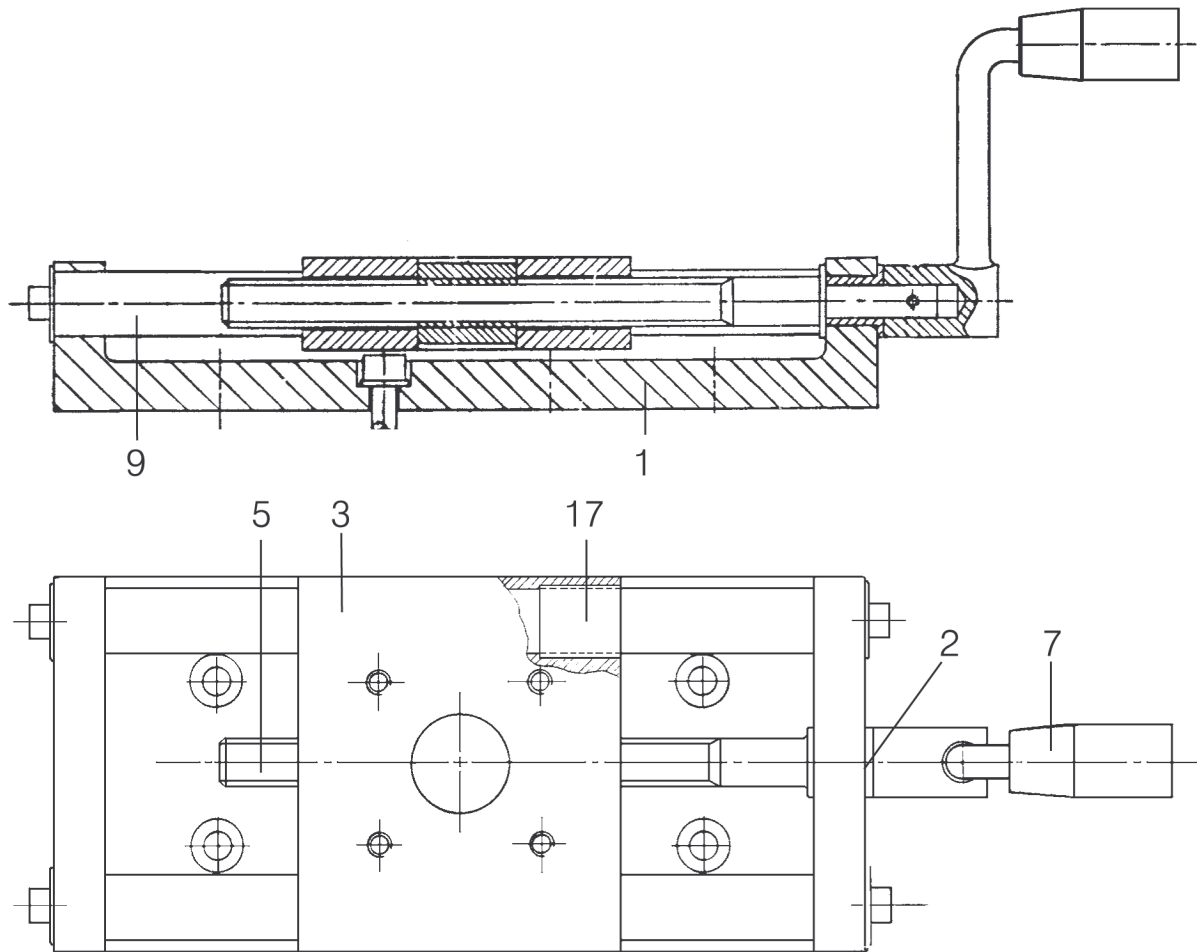
1.20 Slide travel kit - Manual

Item	Qty.	Ordering no.	Denomination	Notes
		0449 152 880	Slide travel kit	Manual
1	2	0413 518 880	Slide	90 mm
2	1	0413 506 880	Rotary slide	



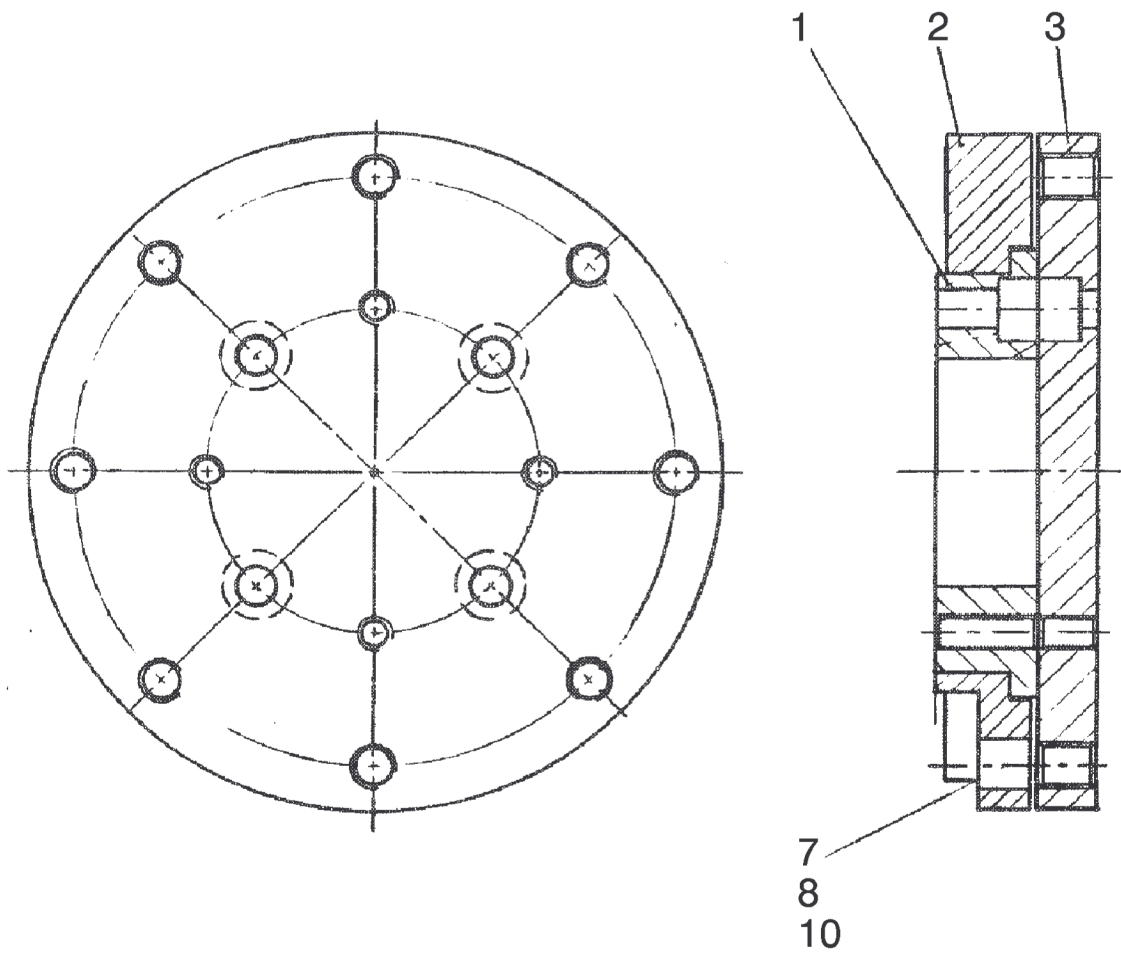
1.21 Slide

Item	Qty.	Ordering no.	Denomination	Notes
		0413 518 880	Slide	
1	1	0413 519 001	Slide profile	
2	1	0413 524 001	Bearing bushing	
3	1	0413 521 001	Runner	
5	1	0413 522 001	Lead screw	
7	1	0334 537 002	Crank	
9	2	0413 523 001	Axis	
17	4	0190 240 107	Bearing	



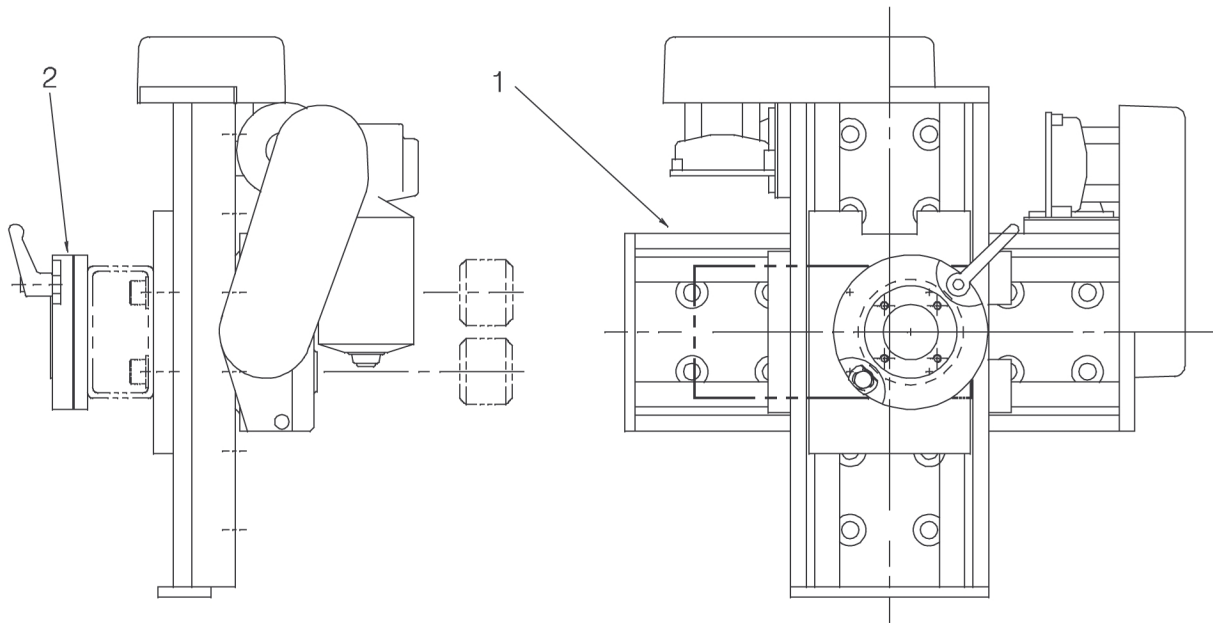
1.22 Rotary slide

Item	Qty.	Ordering no.	Denomination	Notes
		0413 506 880	Rotary slide	
1	1	0413 507 001	Flange	
2	1	0413 508 001	Tension ring	
3	1	0413 509 001	Flange	
7	2	0219 504 305	Belleville spring	
8	1	0193 571 105	Locking piece	
10	1	0193 570 123	Locking lever	



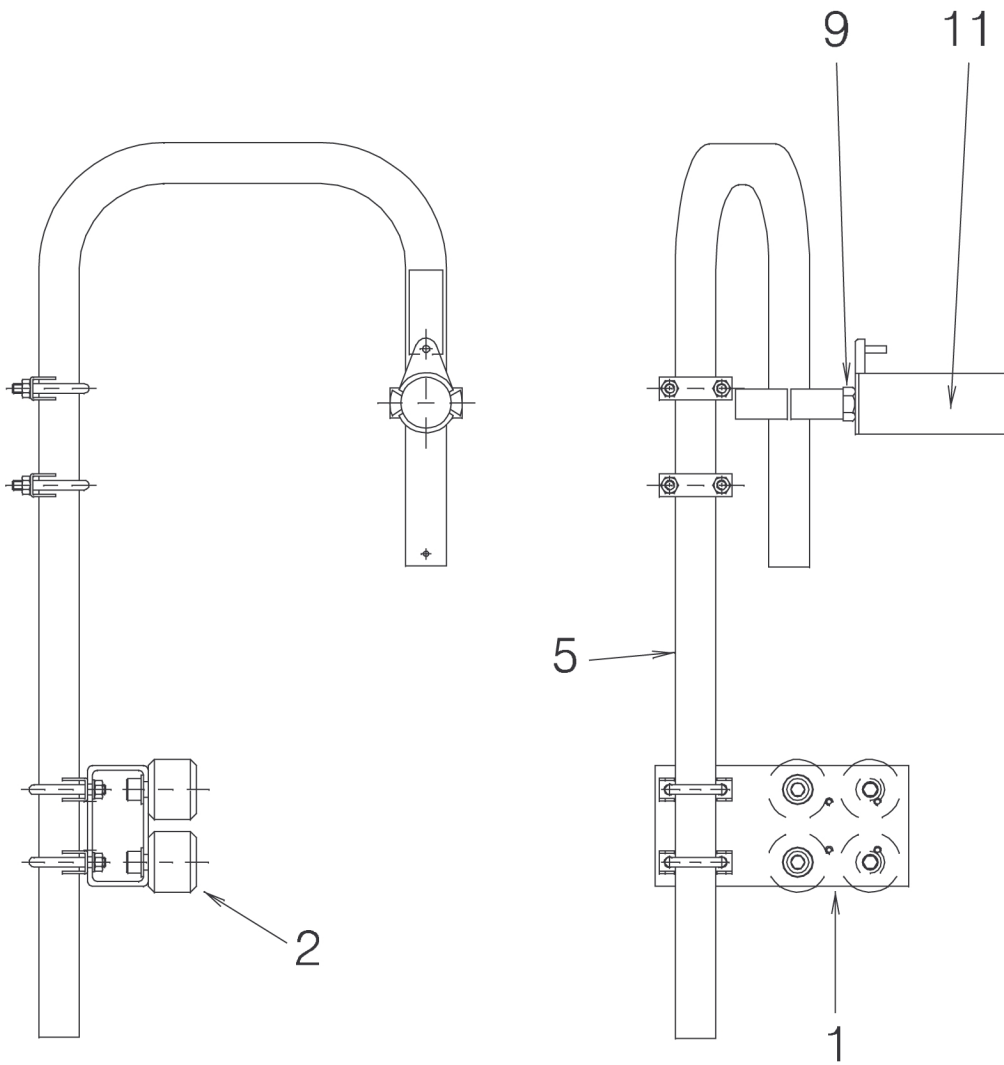
1.23 Motorised slide kit

Item	Qty.	Ordering no.	Denomination	Notes
		0449 151 880	Motorised slide kit	
1	2	0334 333 882	Motorised slide	180 mm
2	1	0413 506 880	Circular slide	



1.24 Wire drum holder

Item	Qty.	Ordering no.	Denomination	Notes
		0449 155 880	Wire drum holder	
1	1	0413 926 001	Attachment	
2	4	0278 300 180	Insulator	2000 V
5	1	0413 853 001	Mounting arm	
9	2	0154 734 001	Clamp	
11	1	0146 967 880	Brake hub	





A WORLD OF PRODUCTS AND SOLUTIONS.



For contact information visit esab.com

ESAB AB, Lindholmsallén 9, Box 8004, 402 77 Gothenburg, Sweden, Phone +46 (0) 31 50 90 00

manuals.esab.com

